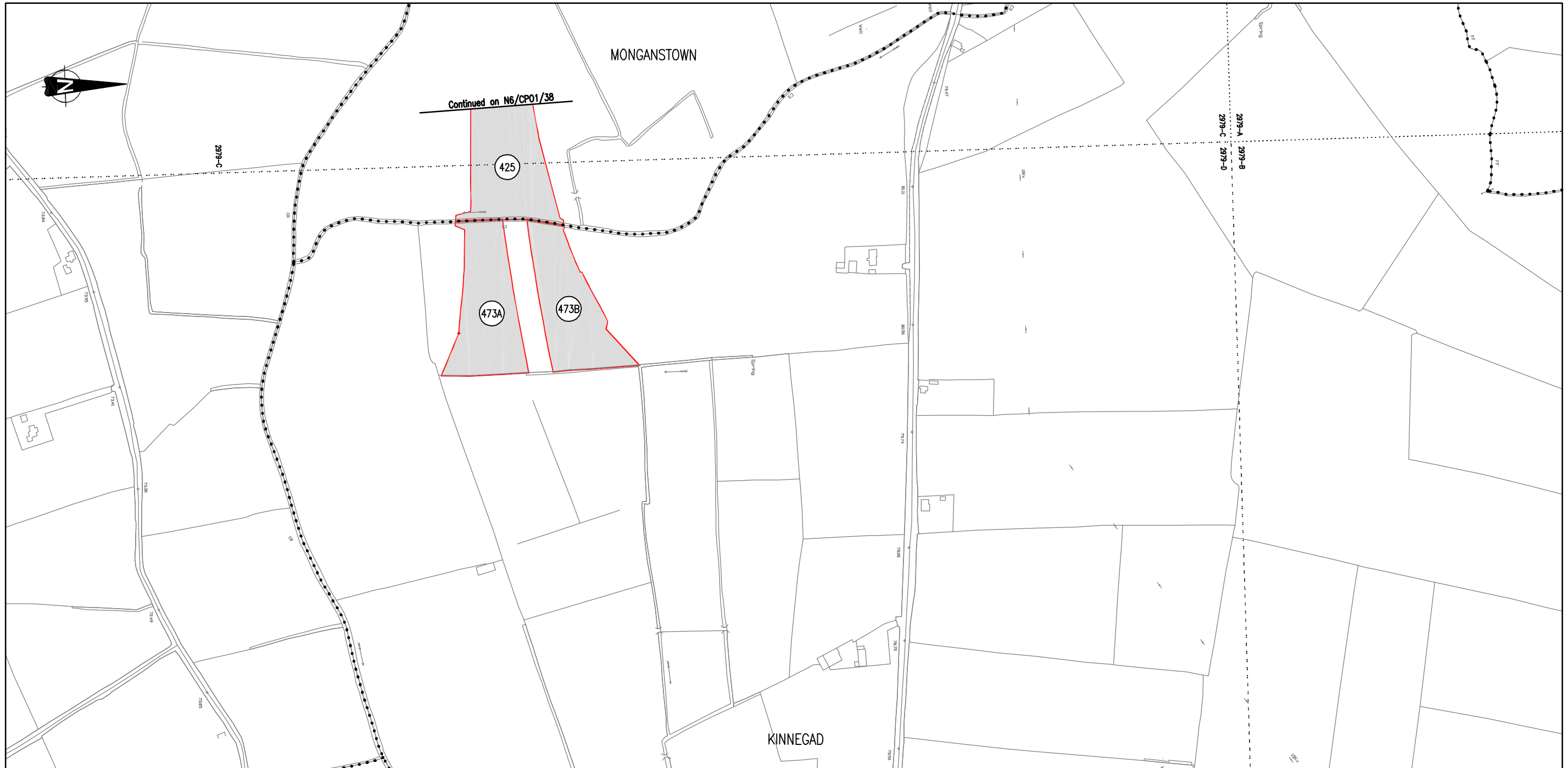


# COMPULSORY PURCHASE No.1 ORDER 2003



LOTS OF LAND TO BE ACQUIRED SHOWN THUS

PRESENT WHEN THE CORPORATE SEAL OF THE WESTMEATH COUNTY COUNCIL WAS AFFIXED  SENIOR EXECUTIVE OFFICER, CORPORATE AFFAIRS  DATED THIS      DAY OF      2003	CORPORATE SEAL
---	----------------

WESTMEATH COUNTY COUNCIL			
N6 KINNEGAD TO ATHLONE			
REVISION	DESCRIPTION	DATE	
COMPULSORY PURCHASE No.1 ORDER 2003			DRAWN D.M. CHECKED D.J.F. APPROVED D.H.L.
		SCALE 1:2500 DATE 23/06/03	DRAWING No. N6/CP01/39
NATIONAL ROADS DESIGN OFFICE CULLEEN BEG MULLINGAR Co. WESTMEATH TEL (044) 34250			